

Engineered "hybrid" Installation Instructions (angle/tap)
Please read before starting:

Engineered "hybrid" is a floating floor which should never be nailed down to the substrate. It should be laid flat and fully supported during shipping and storage. Remove a material from packaging, spread out if possible and allow to condition in room where installation is to take place at a constant temperature of 18-26°C for a period of 24 hours prior to installation.

A full spread glue-down application of Engineered "hybrid" may be workable. Just make sure that the adhesive works well with the backing of Engineered "hybrid"

Check Engineered "hybrid" for possible defects prior to installation. Complaints can only be accepted before installation. Slight variations in color and structure are designed to enhance natural appearance. Mixing the sheets creates a uniform laying pattern. Engineered "hybrid" are production-run sensitive. Ensure that all planks you are installing come from the same production run. Ornabo floor cannot guarantee that any future replacement or additional installation will match the originally-installed product.

Room temperature shall be no less than 18 °C for 24 hours before, during and after installation.

Do not install Engineered "hybrid" flooring where it will be exposed to temperatures greater than 60 °C.

Subfloor must be checked prior to installation:
General information

Engineered "hybrid" flooring can be installed on most existing floors, wooden, PVC and concrete floors. All flooring and padding are free from formaldehyde. The surface is structurally sound, solid, stable, level, plumb and true to a tolerance in place of 3/16" in 10 feet. Cracks and holes must be filled with a fast setting cement-based polymer modified patching compound or equivalent. The surface must be clean of dirt, oil, glue residue etc.

Engineered "hybrid" flooring is to be installed as a floating floor meaning that there must be expansion gap of 6-10mm between the perimeter walls and any adjacent hardwood floor. This applies to any obstructions (columns, pipes) in the installation as well. Installations greater than 10 meters lengthwise or great than 10 widthwise, or these

separate rooms, are recommended with use of transition moldings to provide proper expansion space.

Radiant heat

Engineered "hybrid" can also be installed over radiant heat. Turn the heat off for 24 hours before, during and 24 hours after installation when installing over radiant heated subfloors. After the installation is complete, or when turning on the radiant heat system from a cold start, the operating temperature may be increased by a maximum of 3 °C in a 24 hours period. Make sure that floor temperature must not exceed 28 °C.

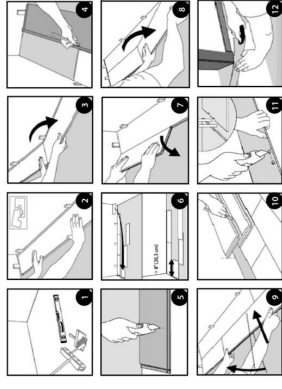
Tools required:

Safety glasses and dust mask, tape measure, pencil, chalk line, spacer blocks, power saw, hammer and tapping block.

Installation instructions:

- Getting started
Check the planks before you start to make sure they are not in any way damaged or they have quality defects. Remember to clean the subfloor.
- First row
Start installation of the planks in the left hand corner, tongue-side facing against the wall. Make sure you are placing the short side of the plank 6-10mm from the wall. The long side can be pushed into place when these rows have been assembled.
- Next planks
Position the end section of the next plank at an angle to the first one, and then lay down. Complete the first row in the same manner.
- Last plank in a row
Place the last plank face down and the short side without the locking strip towards the wall. The distance to the wall should be 6-10mm. Mark where the plank is to be cut.
- Cutting the planks
Place the plank face down on the work surface and cut to size using a circular saw. Use a fine-toothed type if you are using a handsaw. In this case, cut the planks face up.
- Starting the second row
Use a cut piece from the previous row to start the next row. This must be at least 30cm long. If this piece is too short, start with a new plank cut in half. Always ensure that end joints are randomly staggered at least 30cm.

- Continue laying the floor
Place the plank at an angle against the plank in the previous row, press forward and fold down at the same time.
- Continue laying the floor
Place the short end of the plank at an angle against the previously installed plank and fold down. Ensure that the board is positioned on the integral locking strip of the plank in the previous row.
- Continue laying the floor
Lift up the plank along with the plank that was previously laid in the row by about 25mm and press it against the previous row. Bring the panel down again as soon as the planks are positioned tightly together. Do not press the board fully down. After all boards in the row have been put in place, press all boards flat against the subfloor before starting on the next row.
- Laying the last row.
To lay the last row, measure and cut the plank. Leave 6-10mm to the wall.
- Holes for pipes
Measure the diameter of the pipe and drill a hole that is 10mm larger. Saw off a piece and lay the board in place on the floor. Then install the sawed off piece in place using carpenter's glue.
- Door molding and skirting
Lay a board and any additional underlayment (with the decorative side down) next to the door molding and saw. Then slide the board under the molding.


Care and maintenance

Do not wax or polish your Engineered "hybrid" flooring to temperature exceeding 60 °C.

For everyday cleaning, use a vacuum cleaner with wand attachment, a sweeping broom or a slightly dampened mop.

Do not clean your floor with abrasive cleaners, abrasive scrubbing pads or scouring powdered products.

Appropriate mats at entryways are recommended to collect tracked-in dirt, sand and pebbles.

Frequently moved furniture should be equipped with felt pads to avoid scratching the floor. Heavy furniture and appliances should be equipped with non-staining large surface floor protectors. Furniture with castors or wheels must be easy swiveling, large surface non-staining and suitable for resilient floors.

Care must be required whenever furniture is moved. Furniture should never be dragged across the floor. Use an appropriate moving pads if necessary.